



Certificate of Analysis

CANNABUSINESS LABORATORIES, LLC

Customer:
Experimental Farms
6720 Aull Road
Philpot, KY 42366

Sample ID **240104009**
Order Number **CB240104007**
Sample Name **DOG B2**

External Sample ID

Batch Number

Product Type **Edible**

Sample Type **Edible**

Received Date **1/4/2024**

COA Released **1/8/2024**

Comments

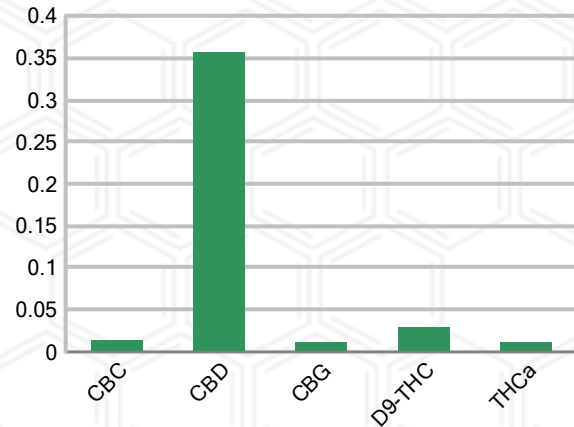
CANNABINOID PROFILE

Analyte	LOQ (%)	% Weight	mg/g
CBC	0.01	0.014	0.145
CBD	0.01	0.356	3.556
CBDa	0.01	ND	ND
CBDV	0.01	ND	ND
CBG	0.01	0.011	0.112
CBGa	0.01	ND	ND
CBN	0.01	ND	ND
d8-THC	0.01	ND	ND
d9-THC	0.01	0.029	0.294
THCa	0.01	0.011	0.113
Total Cannabinoids		0.422	4.220
Total Potential THC		0.039	0.394
Total Potential CBD		0.356	3.556
Total Potential CBG		0.011	0.112
Ratio of Total Potential CBD to Total Potential THC			9.13 : 1
Ratio of Total Potential CBG to Total Potential THC			0.28 : 1

SAMPLE IMAGE



CANNABINOIDS % Weight



*Total Cannabinoids refers to the sum of all cannabinoids detected.

*Total Potential CBD = (0.877 x CBDa) + CBD. *Total Potential THC = (0.877 x THCa) + THC. *Total Potential CBG = (0.877 x CBGa) + CBG.

*Total Potential THC/CBD are calculated to take into account the loss of an acid group during decarboxylation.



J. Hobgood
Laboratory Manager

SIGNATURE

Jamie Hobgood

LABORATORY MANAGER

01/08/2024 11:00 AM

DATE

This product has been tested by CannaBusiness Laboratories using validated testing methodologies and a quality system. Values reported relate only to the product tested. CannaBusiness Laboratories makes no claims as to the efficacy, safety, or other risks associated with any detected or non-detected levels of any compounds reported herein. This Certificate shall not be reproduced except in full, without the written permission of CannaBusiness Laboratories. Photo is of sample received by the lab and may vary from final packaging. The results apply to the sample as received.





Certificate of Analysis

CANNABUSINESS LABORATORIES, LLC

Customer

Experimental Farms
6720 Aull Road
Philpot, KY 42366



Sample Name: DOG B2

Sample ID: 240104009

Order Number: CB240104007

Product Type: Edible

Sample Type: Edible

Received Date: 01/04/2024

Batch Number:

COA released: 01/08/2024 11:00 AM

Potency (mg/g)			
Date Tested: 01/05/2024		Method: CB-SOP-028	
Instrument:			
0.039 %	0.356 %	0.422 %	4.220 mg/g
Total THC	Total CBD	Total Cannabinoids	Total Cannabinoids

Analyte	Result	Units	LOQ	Result	Units
CBC (Cannabichromene)	0.014	%	0.010	0.145	mg/g
CBD (Cannabidiol)	0.356	%	0.010	3.556	mg/g
CBDa (Cannabidiolic Acid)	ND	%	0.010	ND	mg/g
CBDV (Cannabidivarin)	ND	%	0.010	ND	mg/g
CBG (Cannabigerol)	0.011	%	0.010	0.112	mg/g
CBGa (Cannabigerolic Acid)	ND	%	0.010	ND	mg/g
CBN (Cannabinol)	ND	%	0.010	ND	mg/g
D8-THC (D8-Tetrahydrocannabinol)	ND	%	0.010	ND	mg/g
D9-THC (D9-Tetrahydrocannabinol)	0.029	%	0.010	0.294	mg/g
THCa (Tetrahydrocannabinolic Acid)	0.011	%	0.010	0.113	mg/g



J. Hobgood
Laboratory Manager

Jamie Hobgood

01/08/2024 11:00 AM

SIGNATURE

DATE

NT = Not tested, ND = Not detected; LOQ = Limit of Quantitation; <LOQ = Detected; >ULOL = Above upper limit of linearity; CFU/g = Colony forming units per 1 gram; TNTC = Too numerous to count

This product has been tested by CannaBusiness Laboratories using validated testing methodologies and a quality system. Values reported relate only to the product tested. CannaBusiness Laboratories makes no claims as to the efficacy, safety, or other risks associated with any detected or non-detected levels of any compounds reported herein. This Certificate shall not be reproduced except in full, without the written permission of CannaBusiness Laboratories. Photo is of sample received by the lab and may vary from final packaging. The results apply to the sample as received.