



Certificate of Analysis

CANNABUSINESS LABORATORIES, LLC

Customer:

CKD 3933 LLC
3933 Plainfield Ave NE

Grand Rapids, MI 49525

Received Date **12/1/2022**

COA Released **12/5/2022**

Comments

Sample ID **221129035**

Order Number **CB221129013**

Sample Name **50mg Full spectrum Gummy
and Cosmic Drops**

External Sample ID

Batch Number

Product Type **Edible**

Sample Type **Edible**

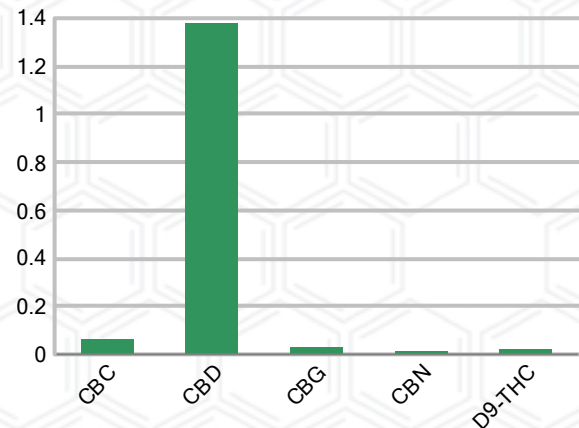
CANNABINOID PROFILE (Product Size = 3.5 g)

Analyte	LOQ (%)	% Weight	mg/g	mg/unit
CBC	0.01	0.065	0.653	2.29
CBD	0.01	1.381	13.81	48.34
CBDa	0.01	ND	ND	ND
CBDV	0.01	ND	ND	ND
CBG	0.01	0.031	0.310	1.08
CBGa	0.01	ND	ND	ND
CBN	0.01	0.014	0.143	0.50
d8-THC	0.01	ND	ND	ND
d9-THC	0.01	0.020	0.195	0.68
THCa	0.01	ND	ND	ND
Total Cannabinoids		1.511	15.11	52.88
Total Potential THC		0.020	0.200	0.70
Total Potential CBD		1.381	13.81	48.34
Total Potential CBG		0.031	0.310	1.08
Ratio of Total Potential CBD to Total Potential THC				69.05 : 1
Ratio of Total Potential CBG to Total Potential THC				1.55 : 1

SAMPLE IMAGE



CANNABINOIDS % Weight



*Total Cannabinoids refers to the sum of all cannabinoids detected.

*Total Potential CBD = (0.877 x CBDa) + CBD. *Total Potential THC = (0.877 x THCa) + THC. *Total Potential CBG = (0.877 x CBGa) + CBG.

*Total Potential THC/CBD are calculated to take into account the loss of an acid group during decarboxylation.



Jamie Hobgood
Laboratory Manager

SIGNATURE

Jamie Hobgood

LABORATORY MANAGER

12/05/2022 2:42 PM

DATE

This product has been tested by CannaBusiness Laboratories using validated testing methodologies and a quality system. Values reported relate only to the product tested. CannaBusiness Laboratories makes no claims as to the efficacy, safety, or other risks associated with any detected or non-detected levels of any compounds reported herein. This Certificate shall not be reproduced except in full, without the written permission of CannaBusiness Laboratories. Photo is of sample received by the lab and may vary from final packaging. The results apply to the sample as received.



Certificate of Analysis

CANNABUSINESS LABORATORIES, LLC

Customer

CKD 3933 LLC
3933 Plainfield Ave NE
Grand Rapids, MI 49525



Overall Batch Results	
Pesticide	Moisture Content
Potency	Water Activity
Mycotoxins	Heavy Metals
Microbial Screen	Residual Solvents
Terpenoids	

Sample Name: 50mg Full spectrum Gummy and Cosmic
Sample ID: ~~D2022~~29035
Order Number: CB221129013
Product Type: Edible
Sample Type: Edible
Received Date: 12/01/2022
Batch Number:
COA released: 12/05/2022 2:42 PM

Potency (mg/g)

Date Tested: 12/02/2022 Method: CB-SOP-028
Instrument:

0.020 % Total THC	1.381 % Total CBD	1.511 % Total Cannabinoids	15.11 mg/g Total Cannabinoids
-----------------------------	-----------------------------	--------------------------------------	---

Analyte	Result	Units	LOQ	Result	Units
CBC (Cannabichromene)	0.065	%	0.010	0.653	mg/g
CBD (Cannabidiol)	1.381	%	0.010	13.81	mg/g
CBDa (Cannabidiolic Acid)	ND	%	0.010	ND	mg/g
CBDV (Cannabidivarin)	ND	%	0.010	ND	mg/g
CBG (Cannabigerol)	0.031	%	0.010	0.310	mg/g
CBGa (Cannabigerolic Acid)	ND	%	0.010	ND	mg/g
CBN (Cannabinol)	0.014	%	0.010	0.143	mg/g
D8-THC (D8-Tetrahydrocannabinol)	ND	%	0.010	ND	mg/g
D9-THC (D9-Tetrahydrocannabinol)	0.020	%	0.010	0.195	mg/g
THCa (Tetrahydrocannabinolic Acid)	ND	%	0.010	ND	mg/g



J.Hobgood
Laboratory Manager

Jamie Hobgood

12/05/2022 2:42 PM

SIGNATURE

DATE

NT = Not tested, ND = Not detected; LOQ = Limit of Quantitation; <LOQ = Detected; >ULOL = Above upper limit of linearity; CFU/g = Colony forming units per 1 gram; TNTC = Too numerous to count

This product has been tested by CannaBusiness Laboratories using validated testing methodologies and a quality system. Values reported relate only to the product tested. CannaBusiness Laboratories makes no claims as to the efficacy, safety, or other risks associated with any detected or non-detected levels of any compounds reported herein. This Certificate shall not be reproduced except in full, without the written permission of CannaBusiness Laboratories. Photo is of sample received by the lab and may vary from final packaging. The results apply to the sample as received.